



A perfect, hasslefree home to get on the property ladder

Set in a sought-after development, on the outskirts of town by award-winning developer

In superb condition from top to bottom and boasting dual zone gas central heating

Stylish kitchen with French doors and dining area

Benefits from two well presented bedrooms

Would be ideal for anybody looking to downsize

Benefits from still being under the NHBC warranty providing peace of mind

Spacious light and airy lounge

Boasts a stylish first floor bathroom plus ground floor WC

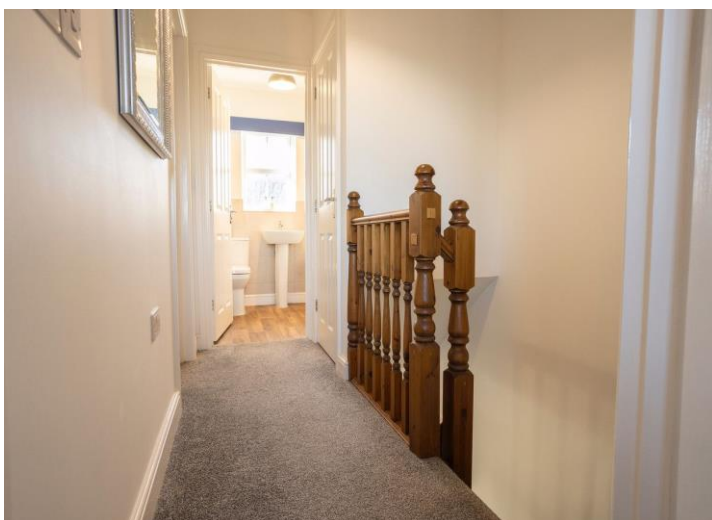
Driveway for parking and garden for relaxing

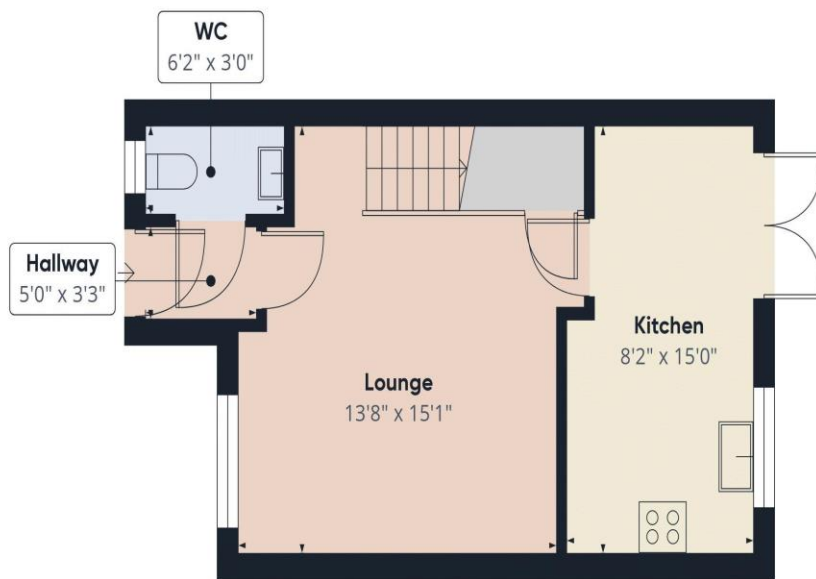
Nestled in a sought-after development on the outskirts of town, this 2-bedroom semi-detached house is the perfect hassle-free home for those looking to step onto the property ladder or downsize to a more manageable space. Crafted by an award-winning developer, this property is a true gem that retains the sparkle of being under the NHBC warranty, offering peace of mind to the new homeowner. Step inside to find a superbly maintained interior, from the spacious, light-filled lounge with large, under stairs cupboard to the stylish kitchen complete with integrated appliances including a gas burning hob, oven, fridge freezer, dishwasher and washing machine and French doors leading out on to the garden.

Venture upstairs to discover a modern bathroom alongside two well-appointed bedrooms, each offering a peaceful retreat at the end of the day. You could always pamper yourself by using the second bedroom as a dressing room or perhaps a home office is what is required. Downstairs, a convenient ground floor WC adds to the practicality of this charming abode. Outside, a driveway provides parking convenience, while the garden offers a tranquil space for relaxation with views stretching towards the majestic Cumbrian Fells. And when the allure of nature calls, a short drive finds you at the coast, adding a touch of seaside magic to your every-day routine. If urban amenities are what you seek, the Whitehaven town centre is less than a 10-minute drive away, ensuring that convenience and comfort are never far from your doorstep.

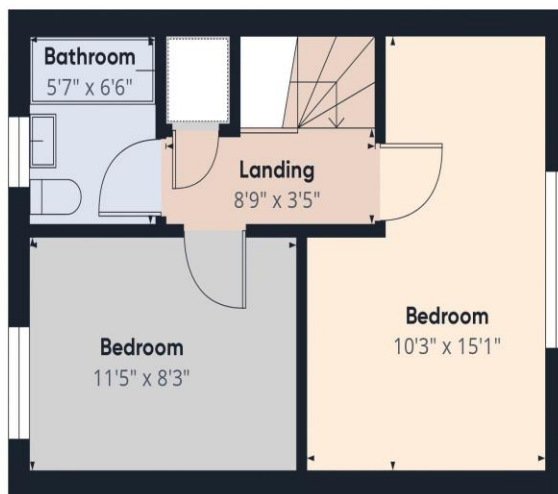
Give in to the allure of this delightful home, where modern comforts meet tranquil surroundings to create the perfect setting for your next chapter. Whether enjoying a quiet morning coffee in the garden or entertaining friends in the stylish interiors, this property offers a lifestyle that effortlessly blends convenience with comfort. Don't miss your chance to make this house your home, where every detail has been lovingly cared for to create a sanctuary that welcomes you with open arms.







Ground Floor



Floor 1



Approximate total area⁽¹⁾
645.83 ft²

(1) Excluding balconies and terraces

While every attempt has been made to ensure accuracy, all measurements are approximate, not to scale. This floor plan is for illustrative purposes only.

Calculations were based on RICS IPMS 3C standard. Please note that calculations were adjusted by a third party and therefore may not comply with RICS IPMS 3C.

GIRAFFE360