



Stunning two bedroom dormer bungalow

bright and spacious lounge with feature fireplace

Both double bedrooms are beautifully presented

The property boasts a large gated driveway to the front

The outbuilding in the rear garden provides excellent storage

Immaculately presented throughout and ready to move into

Kitchen diner boasts modern flooring and French doors with perfect fit blinds

Stylish bathroom with four piece suite

The rear garden is a delight with artificial turf and patio areas

Just a stones throw from local amenities

Nestled in the heart of the sought-after Moorclose area in Workington, this stunning 2 bedroom dormer bungalow is a true gem waiting to be explored. Convenience is key here, with local amenities such as a post office, deli, and convenience store just a stone's throw away, while popular schools and playparks are all within easy walking distance. As you step into the bright and airy hallway, the modern décor and stylish tiled flooring set the tone for the elegance that flows throughout the property.

The lounge is a tranquil haven flooded with natural light from the large uPVC double glazed window, complete with stylish blinds. A feature fireplace with an elegant black surround and modern hexagonal tiled hearth adds a touch of sophistication. The kitchen diner is a space to be enjoyed with plenty of room for a dining set, leading out to the rear garden through anthracite French doors. Upstairs, two beautifully presented double bedrooms await, with the master offering a charming dressing area. The fabulous bathroom features a stylish four-piece suite, perfect for unwinding after a long day.

Outside, the front of the property boasts a gated driveway accommodating two cars and gated access to the side. The rear garden is a sun trap with artificial turf and seating areas, ideal for entertaining loved ones. Safely enclosed by walls, it is the perfect haven for pets and children. An impressive large outbuilding with lighting and power provides fantastic storage space. Suitable for first-time buyers, couples, or small families, this home won't stay on the market for long. Embrace the opportunity and schedule a viewing today before it's too late.



Selling with First Choice Move

First Choice Move began in 2010 from humble beginnings—from a kitchen table in Egremont. Built on family values, hard work, and a passion for property, we have grown to become the largest estate agency in West Cumbria. As a family-run business, we believe in combining traditional estate agency values with the very latest marketing techniques to ensure every property gets maximum exposure. From high-quality photography, 3D tours, drone photography, videos and professional floorplans to online advertising and social media campaigns, we use a tailored approach to attract the right buyers. Our commitment to excellence has earned us multiple national, industry-recognised awards, a testament to our dedication to delivering outstanding service and results. We are more than just an estate agency—we're a trusted partner for buyers and sellers across West Cumbria, combining innovation with personal service to help you move with confidence.



Mortgages

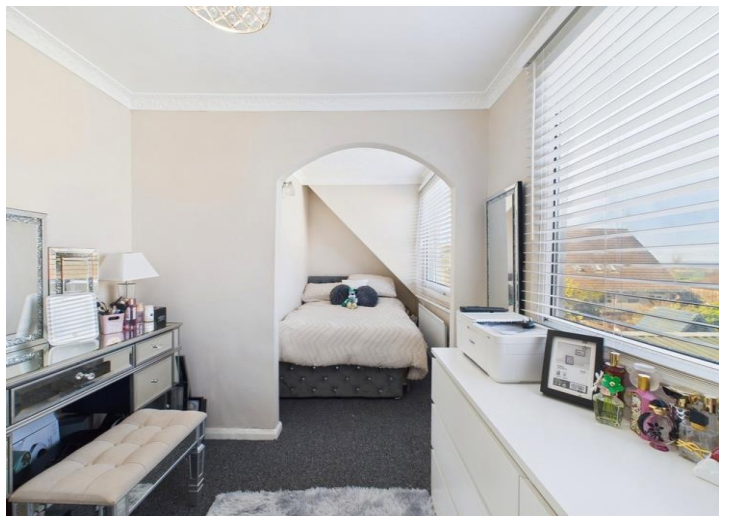
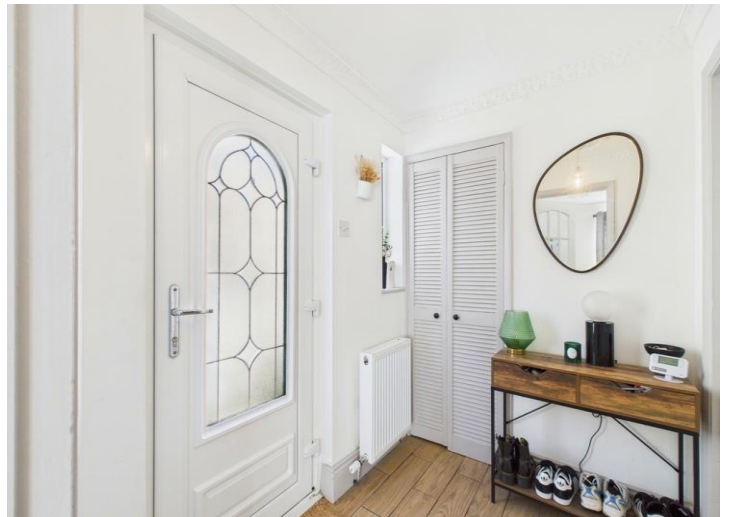
Need help finding the right mortgage for your needs? First Choice Move Mortgage Services are part of the Mortgage Advice Bureau network, one of the UK's largest award-winning mortgage brokers. We can search from a selection of over 90 different lenders with over 12,000 different mortgages, including exclusive deals only available through us, to find the right deal for you. Our advice will be specifically tailored to your needs and circumstances, which could be for a first-time buyer, home-mover, or for re-mortgaging or investing in property. Contact us on 01946 413001 to arrange a free consultation with one of our experienced and dedicated in house mortgage and protection advisers. You may have to pay an early repayment charge to your existing lender if you re-mortgage. There may be a fee for mortgage advice. The actual amount you pay will depend upon your circumstances. The fee is up to 1% but a typical fee is 0.3% of the amount borrowed.



Note

Please note that all measurements have been taken using a laser tape measure which may be subject to a small margin of error. Some photos may have been taken with a wide-angle camera lens. First Choice Move has not tested any apparatus, equipment, fixtures and fittings or services and so cannot verify that they are in working order or fit for the purpose. A buyer is advised to obtain verification from their solicitor or surveyor. References to the tenure of a property are based on information supplied by the Seller. The Agent has not had sight of the title documents.





First Choice Move Ltd. registered in England and Wales Number 0767776 VAT number 118201945
Registered office and postal address:
GATE HOUSE, HALLWOOD ROAD, LILLYHALL, WORKINGTON, CUMBRIA. CA14 4JR

Tel: 01900 837 804 Tel: 01946 413 001 Email: admin@firstchoicemove.co.uk www.firstchoicemove.co.uk



First Choice Move Ltd. registered in England and Wales Number 0767776 VAT number 118201945
Registered office and postal address:
GATE HOUSE, HALLWOOD ROAD, LILLYHALL, WORKINGTON, CUMBRIA. CA14 4JR

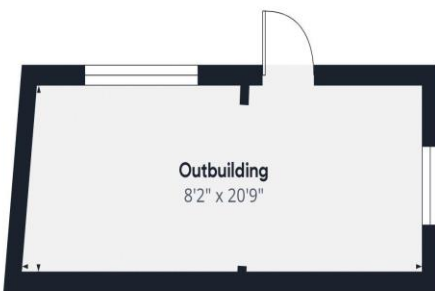
Tel: 01900 837 804 Tel: 01946 413 001 Email: admin@firstchoicemove.co.uk www.firstchoicemove.co.uk



Ground Floor Building 1



Floor 1 Building 1



Ground Floor Building 2



Approximate total area⁽¹⁾

874.57 ft²

Reduced headroom

4.95 ft²

(1) Excluding balconies and terraces

Reduced headroom

..... Below 5 ft

While every attempt has been made to ensure accuracy, all measurements are approximate, not to scale. This floor plan is for illustrative purposes only.

Calculations were based on RICS IPMS 3C standard. Please note that calculations were adjusted by a third party and therefore may not comply with RICS IPMS 3C.

GIRAFFE360