



Located in a highly sought after area of Workington

Feature oak veneer doors

Two spacious double bedrooms, master bedroom boasts fitted wardrobes

Boasts a large drive and garage

Ideal for first time buyers, couple and perhaps those downsizing

Spacious, tastefully decorated lounge

Open plan kitchen and diner for modern living

Large first floor bathroom suite

Low maintenance garden to both the front and rear

Walking distance to shops and post office

Welcome to this gem of a property nestled in the heart of the highly sought after area of Workington. This lovingly maintained home exudes warmth and charm from the moment you step through the door. The spacious lounge is the perfect spot to unwind and entertain, decorated with a tasteful touch that makes you feel right at home. The feature oak veneer doors add a touch of elegance, enhancing the overall character of the space. The open plan kitchen and diner offer a modern living layout, creating a seamless flow between cooking, dining, and relaxing. It's the heart of the home where you can whip up delicious meals while still mingling with guests or family. Two generously sized double bedrooms provide ample space for rest and relaxation. The master bedroom comes complete with fitted wardrobes, offering plenty of storage to keep your belongings neatly organised. Upstairs, the large bathroom suite beckons you to unwind and soak your cares away. The spacious layout allows for a luxurious bathing experience, making it a perfect retreat after a long day. Outside, the property boasts a large drive and garage, providing ample parking space for your vehicles or extra storage for your belongings. The low maintenance garden both to the front and rear offers a tranquil oasis where you can enjoy some fresh air and greenery without the need for constant upkeep. This property is ideal for first-time buyers looking to step onto the property ladder, couples searching for a cosy abode to call their own, or those looking to downsize without compromising on comfort or style. Situated within walking distance to local shops and the post office, convenience is at your doorstep, making errands a breeze. Whether you're running a quick grocery errand or sending out mail, everything you need is just a stone's throw away. With its blend of comfort, style, and convenience, this property is a rare find that offers the perfect canvas for you to create your own happy memories. Don't miss your chance to make this house your home sweet home in Workington



ACCOMMODATION

Living in the Workington area

Set on the west coast of Cumbria, Workington is a thriving town, positioned between the breath taking Lake District National Park and the stunning Cumbrian coastline, residents enjoy the best of both worlds. Workington's town centre is a bustling hub, home to a variety of shops, supermarkets, restaurants, and cafes. The town has a strong sense of community, there's also a lively social scene, with a great selection of pubs, bars, and entertainment venues, including a cinema and theatre. For families, Workington is an excellent place to live, with numerous primary and secondary schools providing quality education. The town's parks and leisure facilities, including a well-equipped sports centre, make it a great location for children to grow up with plenty of activities. Workington is perfect for those who love the outdoors. Whether it's hiking in the national park, enjoying a coastal walk along the Solway Firth, or making the most of local golf courses and cycling routes, there's no shortage of ways to stay active. With its rich history, welcoming community, and excellent location, Workington offers a fantastic lifestyle for individuals, families, and retirees alike.

TENURE

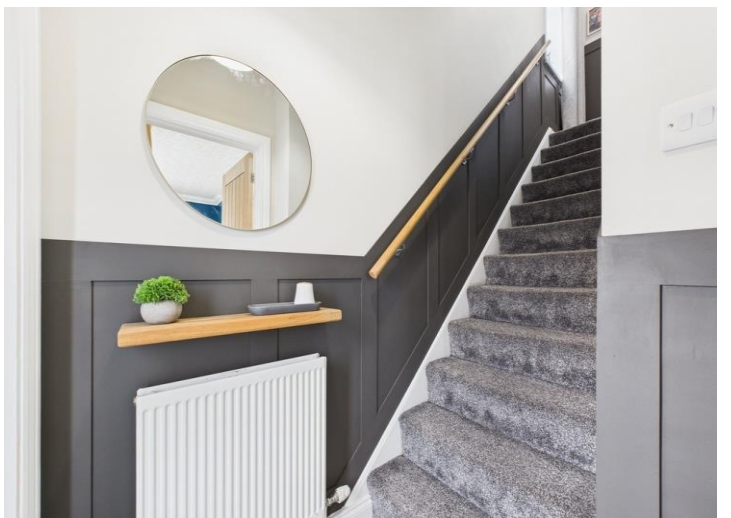
We have been informed by the vendor that the property is freehold.

COUNCIL TAX BAND B

EPC D

LOW FEES, LOCAL EXPERTISE

We are pleased to offer a family run, independent estate agent service in Cumbria, offering property sale services without the premium charges of high street estate agents. We have a range of low fee options and could save you thousands in estate agency fees. Launched in 2011 First Choice Move has grown rapidly, largely due to recommendations and referrals from our many happy customers. Not only could we save you a fortune, but our customers also love our extended open hours, 7PM during the week and 5PM on Saturdays. We offer free valuations, provide great photography and a friendly team which is there to support and guide you from the initial marketing to completion of the sale of your property.



MORTGAGES

Need help finding the right mortgage for your needs? First Choice Move Mortgage Services are part of the Mortgage Advice Bureau network, one of the UK's largest award-winning mortgage brokers. We can search from a selection of over 90 different lenders with over 12,000 different mortgages, including exclusive deals only available through us, to find the right deal for you. Our advice will be specifically tailored to your needs and circumstances, which could be for a first-time buyer, home-mover, or for re-mortgaging or investing in property. Contact us on 01946 413001 to arrange a free consultation with one of our experienced and dedicated in house mortgage and protection advisers. You may have to pay an early repayment charge to your existing lender if you re-mortgage. There may be a fee for mortgage advice. The actual amount you pay will depend upon your circumstances. The fee is up to 1% but a typical fee is 0.3% of the amount borrowed.

NOTE

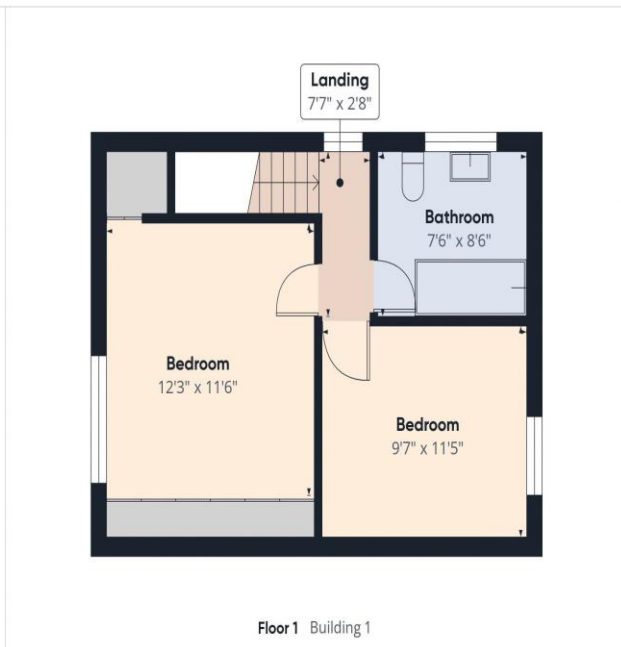
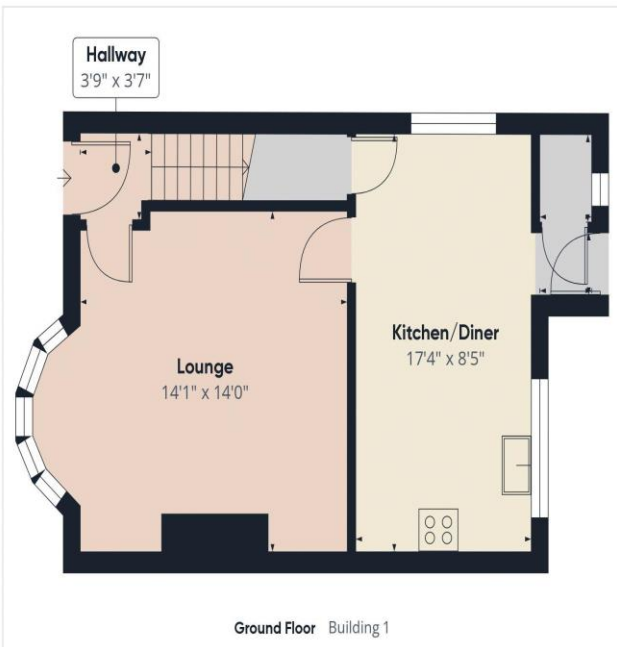
Please note that all measurements have been taken using a laser tape measure which may be subject to a small margin of error. Some photos may have been taken with a wide-angle camera lens. First Choice Move has not tested any apparatus, equipment, fixtures and fittings or services and so cannot verify that they are in working order or fit for the purpose. A buyer is advised to obtain verification from their solicitor or surveyor. References to the tenure of a property are based on information supplied by the Seller. The Agent has not had sight of the title documents.





First Choice Move Ltd. registered in England and Wales Number 0767776 VAT number 118201945
Registered office and postal address:
GATE HOUSE, HALLWOOD ROAD, LILLYHALL, WORKINGTON, CUMBRIA. CA14 4JR

Tel: 01900 837 804 Tel: 01946 413 001 Email: admin@firstchoicemove.co.uk www.firstchoicemove.co.uk



Approximate total area⁽¹⁾
928.17 ft²

(1) Excluding balconies and terraces

While every attempt has been made to ensure accuracy, all measurements are approximate, not to scale. This floor plan is for illustrative purposes only.

Calculations were based on RICS IPMS 3C standard. Please note that calculations were adjusted by a third party and therefore may not comply with RICS IPMS 3C.

GIRAFFE360