



**Stunning, uninterrupted views, probably the best in Whitehaven**

**Has undergone a complete and most impressive transformation**

**The beautiful kitchen benefits from integrated appliances**

**Master ensuite with sunken spa bath and views**

**Very stylish shower room**

**Views across the town, marina, piers, along the coast and toward Scotland**

**Stunning open plan lounge and kitchen with bifold doors**

**Lovely master bedroom with fabulous sea views**

**Benefits from two further spacious double bedrooms**

**Fabulous garden with numerous seating options in which to enjoy the views**

If you appreciate a home with a view, then you will certainly appreciate this property. Enjoying what is probably the best view in Whitehaven, is this stunning, detached bungalow which has undergone a total transformation of light. The property boasts a mesmerising, panoramic and elevated view across Whitehaven, the marina, both piers and the famous candlestick. The view continues up the Cumbrian coastline, across the Solway Firth with Scotland visible in the distance. The view can be enjoyed from all the rear windows and especially the bifold doors of the lounge. The rear garden, which is also a sun trap, is a fabulous place in which to spend time enjoying this splendid view. The property is a testament to the current owner, who has painstakingly and lovingly renovated, modernised, and transformed this property into this stunning stylish home. As you step inside you will immediately notice the open plan kitchen and diner, with bifold doors located at the other end of the room. The kitchen opens up to the lovely living room, with feature fireplace, breakfast bar and partially vaulted ceiling, creating quite a lovely feature. There is an inner hallway which leads to the first two bedrooms. The master bedroom has a fabulous view. Not only that, but you can also access the rear garden from the fully glazed door and the eye-catching ensuite, with sunken spa bath. The last room located off the hallway is the stylish shower room, which like the rest of the property is in fabulous condition. There are stairs from the open plan kitchen and lounge that lead up to the first floor. The ash staircase, with its glass balustrade also creates a lovely feature. The third bedroom is again a spacious double and from here you can enjoy elevated views. This bedroom benefits from an ensuite washroom. Externally, the property benefits from a garage and workshop which provides useful storage. The bungalow is set on a generously sized plot and has a spacious garden at the front, which continues along the side. It is only when you reach the rear garden that you realise the property also has a tremendous amount to offer outside. please contact the office and we will arrange a viewing.



## ACCOMMODATION

### Open plan kitchen and lounge

Step inside this most impressive room and what will be the first thing that you see. Will it be the beautiful kitchen? The glass balustrade of the stairs? The vaulted ceiling? or perhaps it's the stunning view through the bifold doors? There is a reason we say this house probably has the best view in Whitehaven. Stepping up to the bifold doors you can enjoy an uninterrupted view across Whitehaven harbour, the town itself, it's two famous piers, the candlestick and up the Cumbrian coastline and across the Solway Firth with Scotland visible in the distance. On sunny days you can open the bifold doors, allowing in the fresh sea air and making the most of the fabulous view. This lovely room has an open plan kitchen and living area, with the kitchen comprising of high gloss, white wall, and base units, with a stylish worktop and eye-catching tile splashback's. The kitchen boasts a built-in electric oven, with a separate induction hob. There is also an integrated microwave, dishwasher, and fridge freezer. The kitchen features a breakfast bar, a sink, with designer mixer tap and drainer grooves, positioned below a uPVC double glazed window that has a lovely view across the town. As you look up you will see quite a feature with the steel beams utilised to create a modern and stylish feel, and there are also five pendant ceiling lights and two rows of ceiling spotlights. There is stylish flooring, which continues through the entire room and through much of the ground floor. The living area has a stylish fireplace, with a wood shelf above. The room has a large radiator which provides plenty of warmth. Extra natural light is provided by a Velux window. The living area is a fabulous place in which to relax and enjoy the view, whether you are alone or entertaining friends and family. A partially glazed door leads through to an inner hallway and the stairs which lead up to the first floor.

### Inner hallway

Here you will find a cupboard and a continuation of the flooring found in the kitchen. There is also a stylish panel which has been utilised as a coat rack. The hallway leads to two bedrooms and the bathroom.





## Master bedroom

This beautiful double bedroom also boasts a most impressive view. There is a fully glazed uPVC door with side windows that opens out onto the decked area of the rear garden. Whether you want to open the door to step outside or keep it closed on those breezy days the view is simply fantastic. The room has stylish flooring and a designer radiator. This room features a rather special ensuite.

## Master ensuite

Some ensuite's are better than others and this is certainly one of those. Here you will find a sunken spa bath from which you can relax and enjoy a fabulous view of the coastline. Above the spa bath there is also a shower and an additional rainfall showerhead, the control is all placed within the stylish tile surround. The ensuite has a wash basin, with waterfall mixer tap set over a vanity unit with a mirror above. There is a designer radiator, ceiling spotlights and both the walls and floor are beautifully tiled.

## Bedroom two

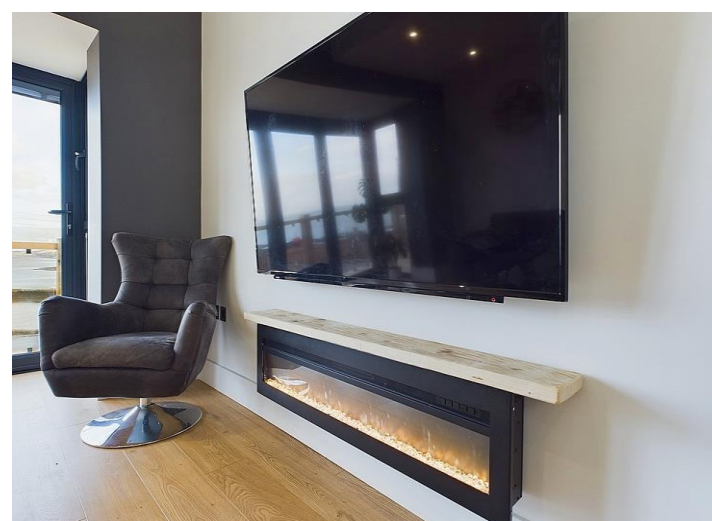
A second spacious double bedroom, with the same stylish flooring found throughout much of the ground floor. The room has a built-in cupboard, radiator, and a uPVC double glazed window to the front.

## Shower room

This luxurious shower room comprises of a large shower with frosted screen and both handheld and rainfall mixer taps. There is a wall hung pushbutton toilet and a designer column radiator. You will also notice the wash basin with mixer tap, set over two drawers and has a movable mirror above with built-in lighting. The shower room has eye-catching tiled walls, tile flooring, ceiling spotlights, an extractor fan, and a uPVC double glazed frosted window.

## First floor landing

Heading up to the first floor you will notice the stylish, ash staircase, with its tinted glass balustrade. On the landing, there is a designer radiator, an under eaves storage cupboard and a door leading to the third bedroom.



### Bedroom three

The third bedroom is certainly of a generous size and has a dormer window, which enjoys the most wonderful and elevated views across the town and harbour, up the coastline and toward Scotland. The room has a radiator, spotlights, main ceiling light and an ensuite.

### Ensuite

in the ensuite you will find a toilet and wash basin with mixer tap, set over a vanity unit. There is also a ceiling spotlight.

### Garage and workshop

The property benefits from a workshop and garage which both have power points and lighting with the garage also having a water supply.

### Exterior

At the front of the property there is an attractive stone wall providing privacy to the front. There is a gate which opens to the path leading to the front door and along the garden. The garden at the front of the property and to the side, is laid to lawn, but also has borders with a variety of shrubs. As you approach the rear garden, you will of course notice the stunning view. The garden has a walkway with glass balustrades, which can be accessed from the bifold doors of the lounge or the fully glazed door of the master bedroom. There is a spacious area of low maintenance gravel, with a large patio area, perfect for garden furniture. There are also some stone steps which lead down to a rather private and secluded area of the garden. This area has a stone seat, low maintenance gravel and a decked area. Even though this area is slightly lower than the surrounding garden it still offers the most incredible views. This is a perfect place in which to unwind and spend summer evenings watching the world go by.

### TENURE

We have been informed by the vendor that the property is freehold.

### COUNCIL TAX BAND C

### EPC TBC





## LOW FEES, LOCAL EXPERTISE

We are pleased to offer a family run, independent estate agent service in Cumbria, offering property sale services without the premium charges of high street estate agents. We have a range of low fee options and could save you thousands in estate agency fees. Launched in 2011 First Choice Move has grown rapidly, largely due to recommendations and referrals from our many happy customers. Not only could we save you a fortune, but our customers also love our extended open hours, 7PM during the week and 5PM on Saturdays. We offer free valuations, provide great photography and a friendly team which is there to support and guide you from the initial marketing to completion of the sale of your property.

## MORTGAGES

Need help finding the right mortgage for your needs? First Choice Move Mortgage Services are part of the Mortgage Advice Bureau network, one of the UK's largest award-winning mortgage brokers. We can search from a selection of over 90 different lenders with over 12,000 different mortgages, including exclusive deals only available through us, to find the right deal for you. Our advice will be specifically tailored to your needs and circumstances, which could be for a first-time buyer, home-mover, or for re-mortgaging or investing in property. Contact us on 01946 413001 to arrange a free consultation with one of our experienced and dedicated in house mortgage and protection advisers. You may have to pay an early repayment charge to your existing lender if you re-mortgage. There may be a fee for mortgage advice. The actual amount you pay will depend upon your circumstances. The fee is up to 1% but a typical fee is 0.3% of the amount borrowed.

## NOTE

Please note that all measurements have been taken using a laser tape measure which may be subject to a small margin of error. Some photos may have been taken with a wide-angle camera lens. First Choice Move has not tested any apparatus, equipment, fixtures and fittings or services and so cannot verify that they are in working order or fit for the purpose. A buyer is advised to obtain verification from their solicitor or surveyor. References to the tenure of a property are based on information supplied by the Seller. The Agent has not had sight of the title documents.







First Choice Move Ltd. registered in England and Wales Number 0767776 VAT number 118201945  
Registered office and postal address:  
GATE HOUSE, HALLWOOD ROAD, LILLYHALL, WORKINGTON, CUMBRIA. CA14 4JR

Tel: 01900 837 804 Tel: 01946 413 001 Email: [admin@firstchoicemove.co.uk](mailto:admin@firstchoicemove.co.uk) [www.firstchoicemove.co.uk](http://www.firstchoicemove.co.uk)

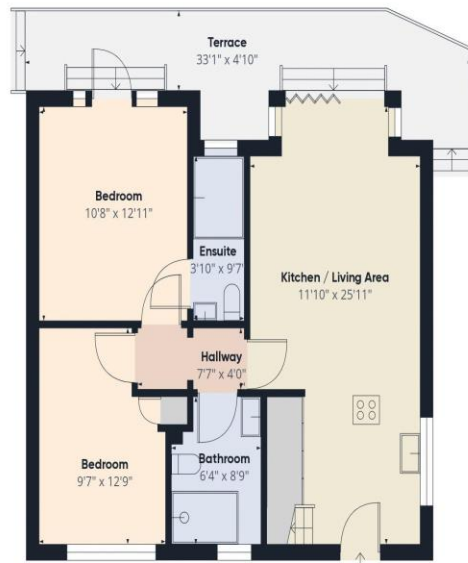




First Choice Move Ltd. registered in England and Wales Number 0767776 VAT number 118201945  
Registered office and postal address:  
GATE HOUSE, HALLWOOD ROAD, LILLYHALL, WORKINGTON, CUMBRIA. CA14 4JR

Tel: 01900 837 804 Tel: 01946 413 001 Email: [admin@firstchoicemove.co.uk](mailto:admin@firstchoicemove.co.uk) [www.firstchoicemove.co.uk](http://www.firstchoicemove.co.uk)





Ground Floor



Floor 1



Approximate total area<sup>(1)</sup>  
875.52 ft<sup>2</sup>

Reduced headroom  
36.63 ft<sup>2</sup>

(1) Excluding balconies and terraces

Reduced headroom  
(below 1.5m/4.92ft)

While every attempt has been made to ensure accuracy, all measurements are approximate, not to scale. This floor plan is for illustrative purposes only.

GIRAFFE360