



A fabulous home spread over three spacious floors

Beautifully presented lounge and equally beautiful dining room

Large utility room providing storage and leading to a WC

Gorgeous and rather luxurious first floor bathroom

Offers superb value for money

Boasting not one or two but four double bedrooms

Stunning kitchen, immaculate condition with integrated appliance

Spacious and attractive landings and hallway

Good sized yard located at the rear

Walking distance to town centre and schools

Welcome to this fantastic three-story home that offers a generous amount of space and comfort for you and your family. With not just one or two, but four double bedrooms, this property is perfect for those needing extra room to spread out or accommodate guests.

Step inside and be greeted by a beautifully presented lounge, ideal for relaxing after a long day, and an equally stunning dining room where you can enjoy delicious meals with loved ones. The kitchen is a chef's dream, boasting immaculate condition and integrated appliances such as a dishwasher, fridge, and oven. Say goodbye to clutter with the large utility room, perfect for extra storage, and housing a convenient WC.

The lovely hallway, featuring a stained-glass door, sets the tone for the rest of the home. The spacious and attractive landings lead you to each well-presented double bedroom, ensuring everyone has their own comfortable space to retreat to at the end of the day.

Escape to the first-floor bathroom, a gorgeous and rather luxurious space featuring a four-piece suite, walk-in shower, and ample storage for all your essentials. No need to compromise on style or comfort in this stunning home.

Outside, a good-sized yard located at the rear offers a private outdoor space where you can enjoy alfresco dining, entertain guests, or simply relax in the fresh air.

This property truly offers superb value for money, providing a rare opportunity to own a home with so much space at such an affordable price.

Conveniently located within walking distance to Workington town centre, you'll have easy access to a wide range of shops and amenities, making daily errands a breeze. Parents will appreciate the proximity to numerous schools including St. Joseph's Catholic High School, Ashfield Junior School, and Ashfield Infant and Nursery School, ensuring quality education options for the little ones.

Don't miss out on the chance to call this impressive property your new home. Schedule a viewing today and see for yourself the endless possibilities that await in this spacious and inviting abode.



Selling with First Choice Move

First Choice Move began in 2010 from humble beginnings—from a kitchen table in Egremont. Built on family values, hard work, and a passion for property, we have grown to become the largest estate agency in West Cumbria. As a family-run business, we believe in combining traditional estate agency values with the very latest marketing techniques to ensure every property gets maximum exposure. From high-quality photography, 3D tours, drone photography, videos and professional floorplans to online advertising and social media campaigns, we use a tailored approach to attract the right buyers. Our commitment to excellence has earned us multiple national, industry-recognised awards, a testament to our dedication to delivering outstanding service and results. We are more than just an estate agency—we're a trusted partner for buyers and sellers across West Cumbria, combining innovation with personal service to help you move with confidence.

Mortgages

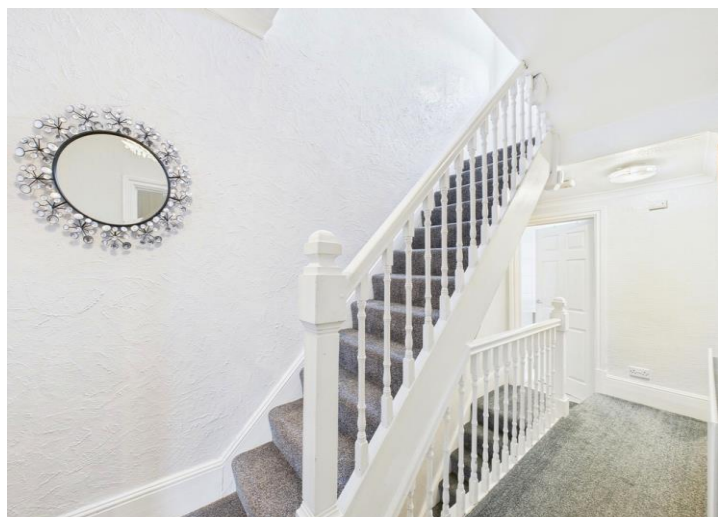
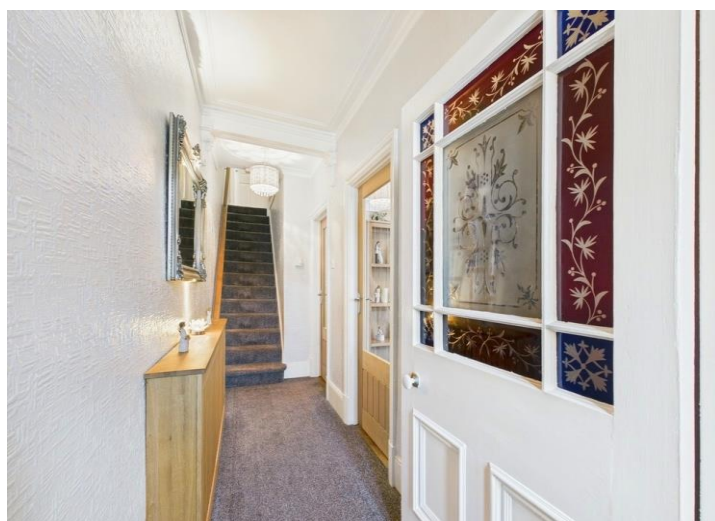
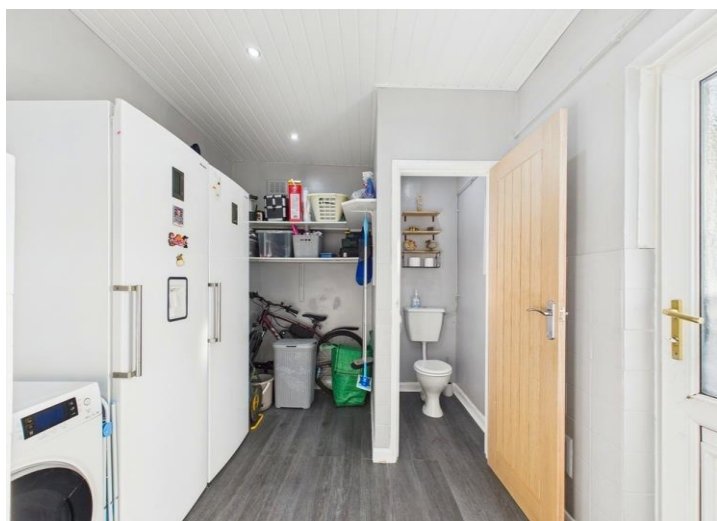
Need help finding the right mortgage for your needs? First Choice Move Mortgage Services are part of the Mortgage Advice Bureau network, one of the UK's largest award-winning mortgage brokers. We can search from a selection of over 90 different lenders with over 12,000 different mortgages, including exclusive deals only available through us, to find the right deal for you. Our advice will be specifically tailored to your needs and circumstances, which could be for a first-time buyer, home-mover, or for re-mortgaging or investing in property. Contact us on 01946 413001 to arrange a free consultation with one of our experienced and dedicated in house mortgage and protection advisers. You may have to pay an early repayment charge to your existing lender if you re-mortgage. There may be a fee for mortgage advice. The actual amount you pay will depend upon your circumstances. The fee is up to 1% but a typical fee is 0.3% of the amount borrowed.

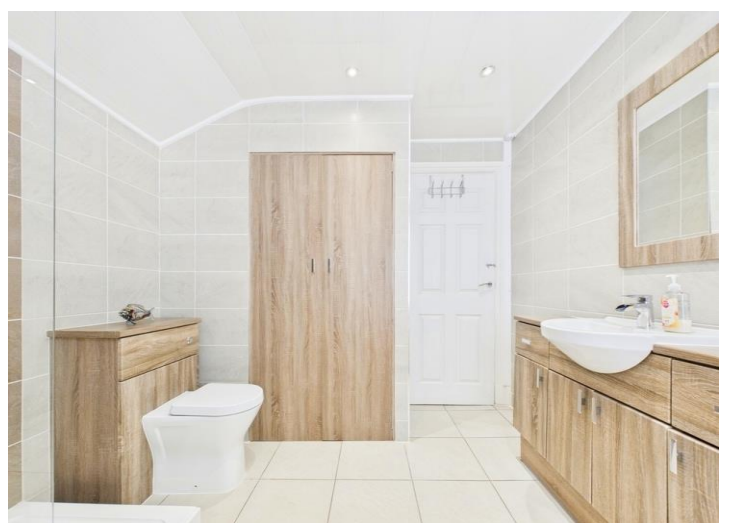
Note

Please note that all measurements have been taken using a laser tape measure which may be subject to a small margin of error. Some photos may have been taken with a wide-angle camera lens. First Choice Move has not tested any apparatus, equipment, fixtures and fittings or services and so cannot verify that they are in working order or fit for the purpose. A buyer is advised to obtain verification from their solicitor or surveyor. References to the tenure of a property are based on information supplied by the Seller. The Agent has not had sight of the title documents.











 <p>Ground Floor</p>	 <p>Floor 1</p>	 <p>Approximate total area[®] 1545.47 ft²</p> <p>Reduced headroom 30.2 ft²</p>
 <p>Floor 2</p>		<p>(1) Excluding balconies and terraces</p> <p>Reduced headroom Below 5 ft</p> <p>While every attempt has been made to ensure accuracy, all measurements are approximate, not to scale. This floor plan is for illustrative purposes only.</p> <p>Calculations were based on RICS IPMS 3C standard. Please note that calculations were adjusted by a third party and therefore may not comply with RICS IPMS 3C.</p> <p>GIRAFFE360</p>