



Beautiful home recently undergone a complete and through transformation

Delightful lounge, full of warmth, charm and attractive decor

Boasts a separate and large utility room, matching the kitchen

Very spacious first floor bathroom suite

Located in a sought after area of Harrington

Just a few minutes walk to the harbour with lovely walks and views towards Scotland are to be enjoyed

Stunning Wren kitchen with island which incorporates a breakfast bar

Boasts three spacious, eye catching bedrooms

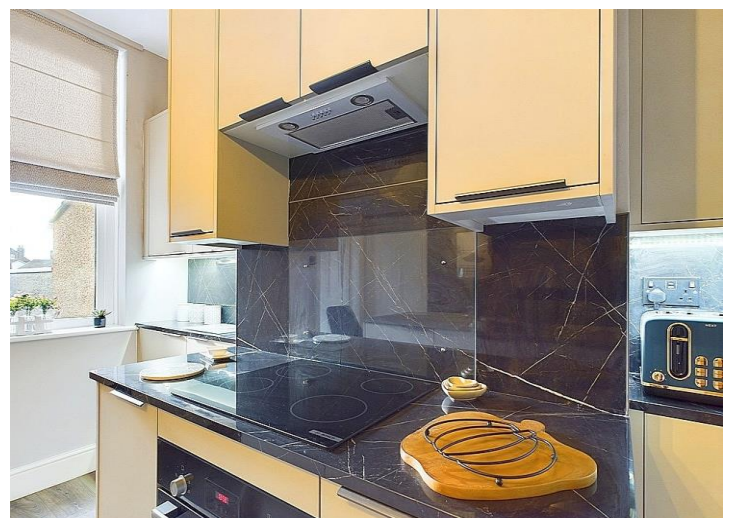
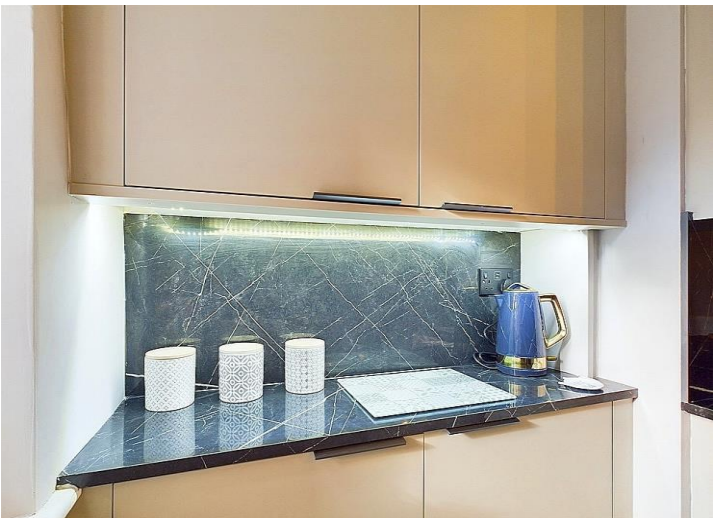
Good sized yard and outbuilding providing plenty of storage

Numerous shops, train station and school are just a stroll away

This delightful 3-bedroom mid-terraced house is the epitome of charm and comfort, having recently undergone a complete transformation that will surely steal your heart. Nestled just a stone's throw away from the serene harbour, this home offers not just a shelter but a lifestyle. Take leisurely strolls along the picturesque pathways admiring the views that stretch as far as the eye can see, with Scotland clearly visible on the horizon. The lounge exudes warmth and character, with inviting decor that makes you never want to leave.

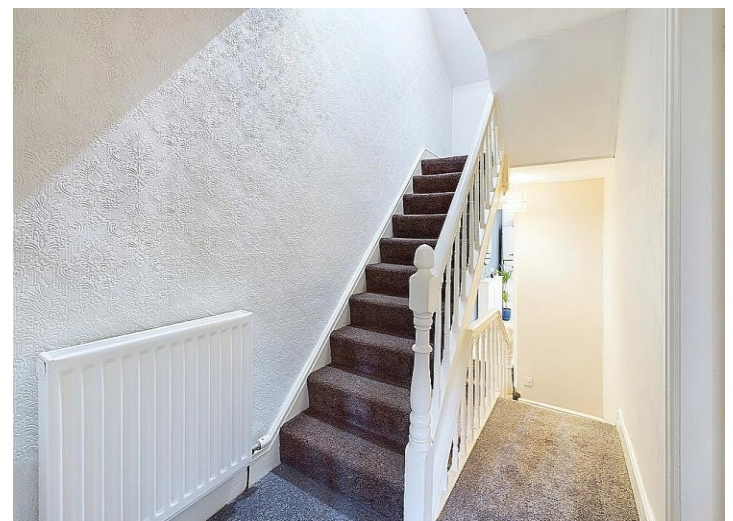
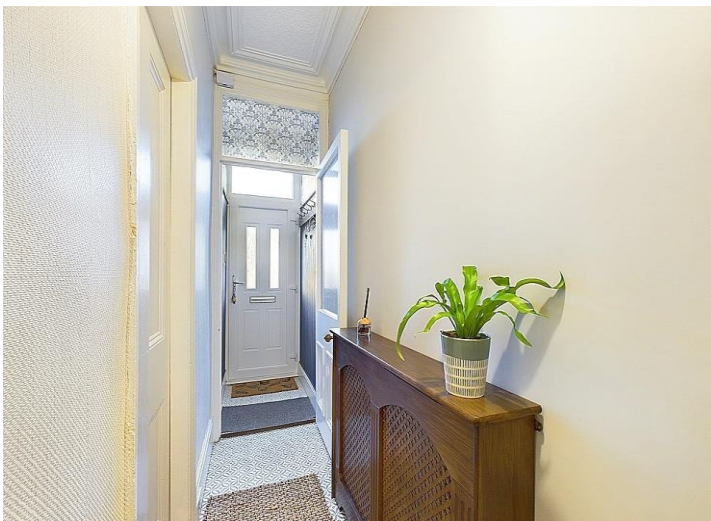
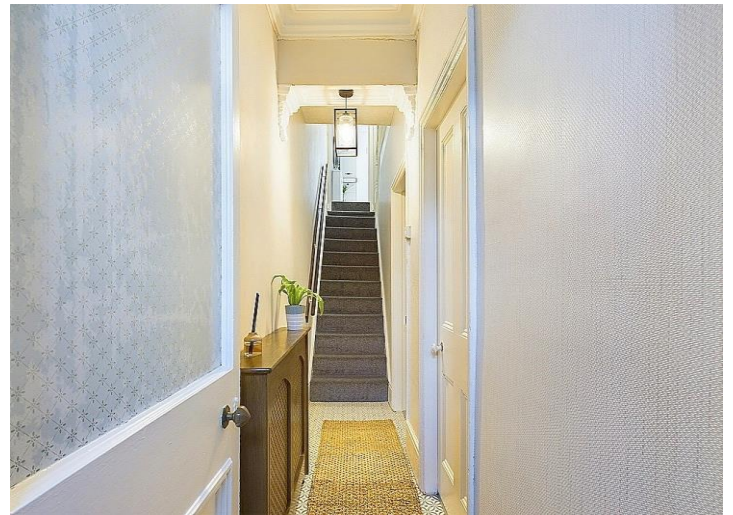
The heart of this home is the stunning Wren kitchen, complete with an island featuring a breakfast bar - perfect for those busy mornings or lingering conversations over coffee. Enjoy the convenience of a spacious utility room that matches the kitchen's elegance, ensuring practicality meets style effortlessly. Three generous bedrooms beckon for relaxation, while the first-floor bathroom suite offers a retreat for your senses. Step outside to a good-sized yard and a handy outbuilding that provides ample storage for all your needs. Located in the sought-after area of Harrington, you'll find everything you desire just a stroll away, from charming shops to the nearby train station. With both Whitehaven and Workington a mere 10-minute drive, convenience is truly at your doorstep. Offered with no chain, make this house your home and embrace a life of comfort and luxury.

With a yard that offers the perfect spot for enjoying a coffee and an outbuilding providing flexibility and convenience, offering a space for your hobbies or storing your treasures. Whether you're seeking relaxation or entertainment, this property caters to your every need. Unwind in your own oasis, where the hustle and bustle of every-day life fades away, leaving you with peace and tranquillity. Welcome to your new home, where every corner is designed to bring joy and comfort to your life.



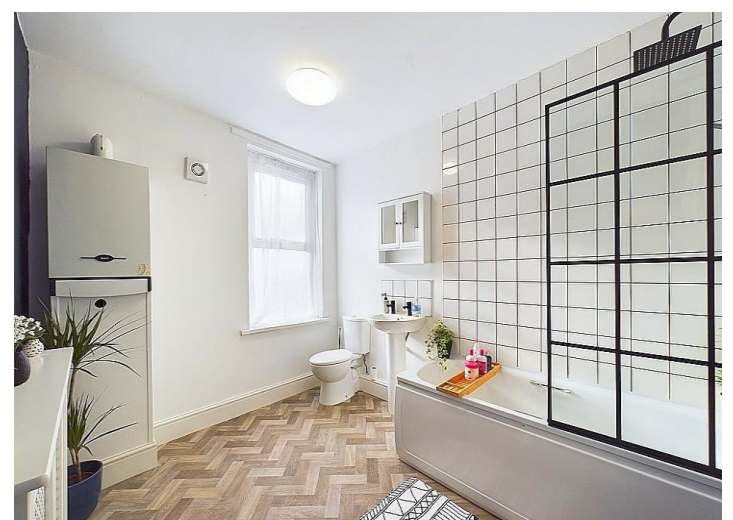
First Choice Move Ltd. registered in England and Wales Number 0767776 VAT number 118201945
Registered office and postal address:
GATE HOUSE, HALLWOOD ROAD, LILLYHALL, WORKINGTON, CUMBRIA. CA14 4JR

Tel: 01900 837 804 Tel: 01946 413 001 Email: admin@firstchoicemove.co.uk www.firstchoicemove.co.uk



First Choice Move Ltd. registered in England and Wales Number 0767776 VAT number 118201945
Registered office and postal address:
GATE HOUSE, HALLWOOD ROAD, LILLYHALL, WORKINGTON, CUMBRIA. CA14 4JR

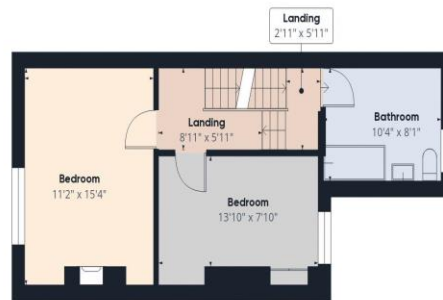
Tel: 01900 837 804 Tel: 01946 413 001 Email: admin@firstchoicemove.co.uk www.firstchoicemove.co.uk







Ground Floor



Floor 1



Floor 2

Approximate total area⁽¹⁾

1218.48 ft²

Reduced headroom

32.77 ft²

(1) Excluding balconies and terraces

Reduced headroom

..... Below 5 ft.

While every attempt has been made to ensure accuracy, all measurements are approximate, not to scale. This floor plan is for illustrative purposes only.

Calculations were based on RICS IPMS 3C standard. Please note that calculations were adjusted by a third party and therefore may not comply with RICS IPMS 3C.

GIRAFFE360