



Traditional terraced, three-bedroom home

Stylish, modern ground floor bathroom

Useful brick built outbuilding

Ideal for First time buyers and couples

Walking distance to train station and busstops

Spacious contemporary kitchen

Large low maintenance, resin-bound, rear yard

Popular coastal-village location

Three double bedrooms

Good links to neighbouring towns

Nestled snugly in the heart of the coastal village of Flimby lies this delightful three-bedroom home, the perfect home for families, couples, or those taking their first steps onto the property ladder.

Located conveniently between the towns of Workington and Maryport, this home offers easy access for those who need to commute or simply enjoy what these towns have to offer, the train and bus stations are within walking distance.

Just a leisurely stroll away, you'll find yourself at the picturesque Cumbrian coastline, where breathtaking views of the sea and even glimpses of Scotland await those who seek them.

Step inside, and you'll be greeted by an entrance hall that leads into a cosy lounge complete with a feature fireplace – the perfect spot to unwind after a long day. The rear hall opens up to a well-appointed kitchen, boasting a range of wood-effect units and marble-effect work surfaces. A large walk-in storage cupboard and ample space for a dining table make this kitchen a practical space. Tucked away at the rear of the ground floor is a modern bathroom, thoughtfully designed with a shower bath for your convenience. And just beyond the kitchen, a handy brick-built lean-to beckons, offering endless possibilities as a utility space or perhaps a peaceful retreat for your morning coffee.

Venture upstairs, and you'll discover three good size bedrooms, with the rear ones offering sea views. Outside, a spacious yard awaits, featuring a resin-bound flooring that basks in the sun all day long – the ideal setting for al fresco dining or simply soaking up the sunshine.

But that's not all – this property comes complete with an outbuilding, boasting two entrances that open to reveal a versatile space perfect for storage or a workshop. Whether you're dreaming of a home that offers both comfort and character or seeking a peaceful haven close to coast, this lovely Flimby home is sure to tick all the boxes. Don't miss your chance to make this charming property your own – schedule a viewing today.



Selling with First Choice Move

First Choice Move began in 2010 from humble beginnings—from a kitchen table in Egremont. Built on family values, hard work, and a passion for property, we have grown to become the largest estate agency in West Cumbria. As a family-run business, we believe in combining traditional estate agency values with the very latest marketing techniques to ensure every property gets maximum exposure. From high-quality photography, 3D tours, drone photography, videos and professional floorplans to online advertising and social media campaigns, we use a tailored approach to attract the right buyers. Our commitment to excellence has earned us multiple national, industry-recognised awards, a testament to our dedication to delivering outstanding service and results. We are more than just an estate agency—we're a trusted partner for buyers and sellers across West Cumbria, combining innovation with personal service to help you move with confidence.

Mortgages

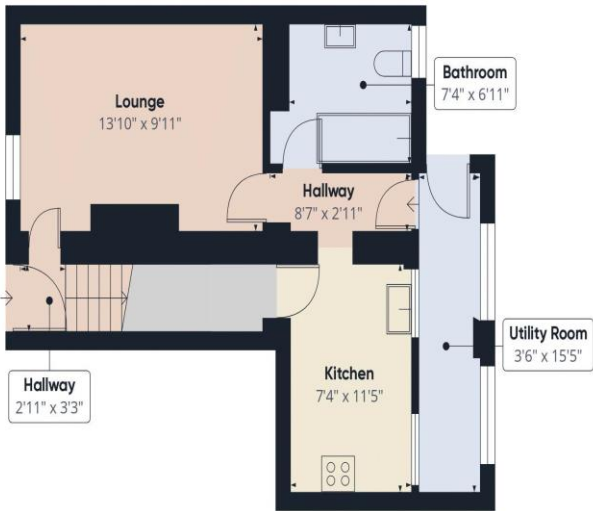
Need help finding the right mortgage for your needs? First Choice Move Mortgage Services are part of the Mortgage Advice Bureau network, one of the UK's largest award-winning mortgage brokers. We can search from a selection of over 90 different lenders with over 12,000 different mortgages, including exclusive deals only available through us, to find the right deal for you. Our advice will be specifically tailored to your needs and circumstances, which could be for a first-time buyer, home-mover, or for re-mortgaging or investing in property. Contact us on 01946 413001 to arrange a free consultation with one of our experienced and dedicated in house mortgage and protection advisers. You may have to pay an early repayment charge to your existing lender if you re-mortgage. There may be a fee for mortgage advice. The actual amount you pay will depend upon your circumstances. The fee is up to 1% but a typical fee is 0.3% of the amount borrowed.

Note

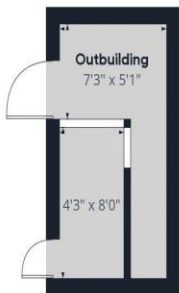
Please note that all measurements have been taken using a laser tape measure which may be subject to a small margin of error. Some photos may have been taken with a wide-angle camera lens. First Choice Move has not tested any apparatus, equipment, fixtures and fittings or services and so cannot verify that they are in working order or fit for the purpose. A buyer is advised to obtain verification from their solicitor or surveyor. References to the tenure of a property are based on information supplied by the Seller. The Agent has not had sight of the title documents.







Approximate total area[™]
1574.57 ft²



(1) Excluding balconies and terraces

Reduced headroom
..... Below 5 ft

While every attempt has been made to ensure accuracy, all measurements are approximate, not to scale. This floor plan is for illustrative purposes only.

Calculations were based on RICS IPMS 3C standard. Please note that calculations were adjusted by a third party and therefore may not comply with RICS IPMS 3C.

GIRAFFE360