



Lovingly maintained, in immaculate condition throughout

Light and airy lounge with neutral decor

Benefits from a utility room with large cupboard

Modern shower room in excellent condition

Low maintenance garden to the front, side and rear

Located in a sought-after area of Cleator Moor

Large kitchen with a dining area and plenty of storage

Two lovely, spacious double bedrooms

Drive provides off street parking

Two minutes drive to Cleator Moor town centre

Welcome to this delightful 2-bedroom detached bungalow nestled in the sought-after area of Cleator Moor. A true gem that has been lovingly maintained and is in immaculate condition throughout.

Step inside and you're greeted by a light and airy lounge, the perfect spot to relax and unwind after a long day. The neutral decor creates a calming atmosphere, making it easy to add your personal touch and feel right at home.

The large kitchen is a real focal point of the home, with a dining area that sets the scene for delicious meals and cosy gatherings. Abundant storage space and integrated appliances make meal prep a breeze, while the utility room with a large cupboard and internal access to the garage adds convenience to your daily routine.

The garage, although reduced in size to accommodate the utility area, still offers excellent storage options. With a pitched roof and an electronic door, it's a versatile space that can adapt to your needs.

Two lovely and spacious double bedrooms provide comfortable sleeping quarters, each offering a peaceful retreat for rest and relaxation. The modern shower room is in excellent condition, rounding out the living spaces with practicality and style.

Outside, the drive provides off-street parking, ensuring convenience and security. The low maintenance garden wraps around the property, offering green spaces to enjoy without the hassle of extensive upkeep. A greenhouse and shed provide additional storage and gardening opportunities for those with green fingers.

This bungalow is perfect for those looking to downsize or seeking a property without stairs, offering a single level living experience that caters to your needs. With Cleator Moor town centre just a two-minute drive away, you have easy access to amenities and shops. Plus, the town of Whitehaven is a quick ten-minute drive, expanding your choices for leisure and entertainment.

In summary, this property ticks all the boxes for a comfortable and convenient living experience in a desirable location. Don't miss the opportunity to make this bungalow your new home sweet home!



Selling with First Choice Move

First Choice Move began in 2010 from humble beginnings—from a kitchen table in Egremont. Built on family values, hard work, and a passion for property, we have grown to become the largest estate agency in West Cumbria. As a family-run business, we believe in combining traditional estate agency values with the very latest marketing techniques to ensure every property gets maximum exposure. From high-quality photography, 3D tours, drone photography, videos and professional floorplans to online advertising and social media campaigns, we use a tailored approach to attract the right buyers. Our commitment to excellence has earned us multiple national, industry-recognised awards, a testament to our dedication to delivering outstanding service and results. We are more than just an estate agency—we're a trusted partner for buyers and sellers across West Cumbria, combining innovation with personal service to help you move with confidence.

MORTGAGES

Need help finding the right mortgage for your needs? First Choice Move Mortgage Services are part of the Mortgage Advice Bureau network, one of the UK's largest award-winning mortgage brokers. We can search from a selection of over 90 different lenders with over 12,000 different mortgages, including exclusive deals only available through us, to find the right deal for you. Our advice will be specifically tailored to your needs and circumstances, which could be for a first-time buyer, home-mover, or for remortgaging or investing in property. Contact us on 01946 413001 to arrange a free consultation with one of our experienced and dedicated in house mortgage and protection advisers. You may have to pay an early repayment charge to your existing lender if you re-mortgage. There may be a fee for mortgage advice. The actual amount you pay will depend upon your circumstances. The fee is up to 1% but a typical fee is 0.3% of the amount borrowed.

NOTE

Please note that all measurements have been taken using a laser tape measure which may be subject to a small margin of error. Some photos may have been taken with a wide-angle camera lens. First Choice Move has not tested any apparatus, equipment, fixtures and fittings or services and so cannot verify that they are in working order or fit for the purpose. A buyer is advised to obtain verification from their solicitor or surveyor. References to the tenure of a property are based on information supplied by the Seller. The Agent has not had sight of the title documents.





First Choice Move Ltd. registered in England and Wales Number 0767776 VAT number 118201945
Registered office and postal address:
GATE HOUSE, HALLWOOD ROAD, LILLYHALL, WORKINGTON, CUMBRIA. CA14 4JR

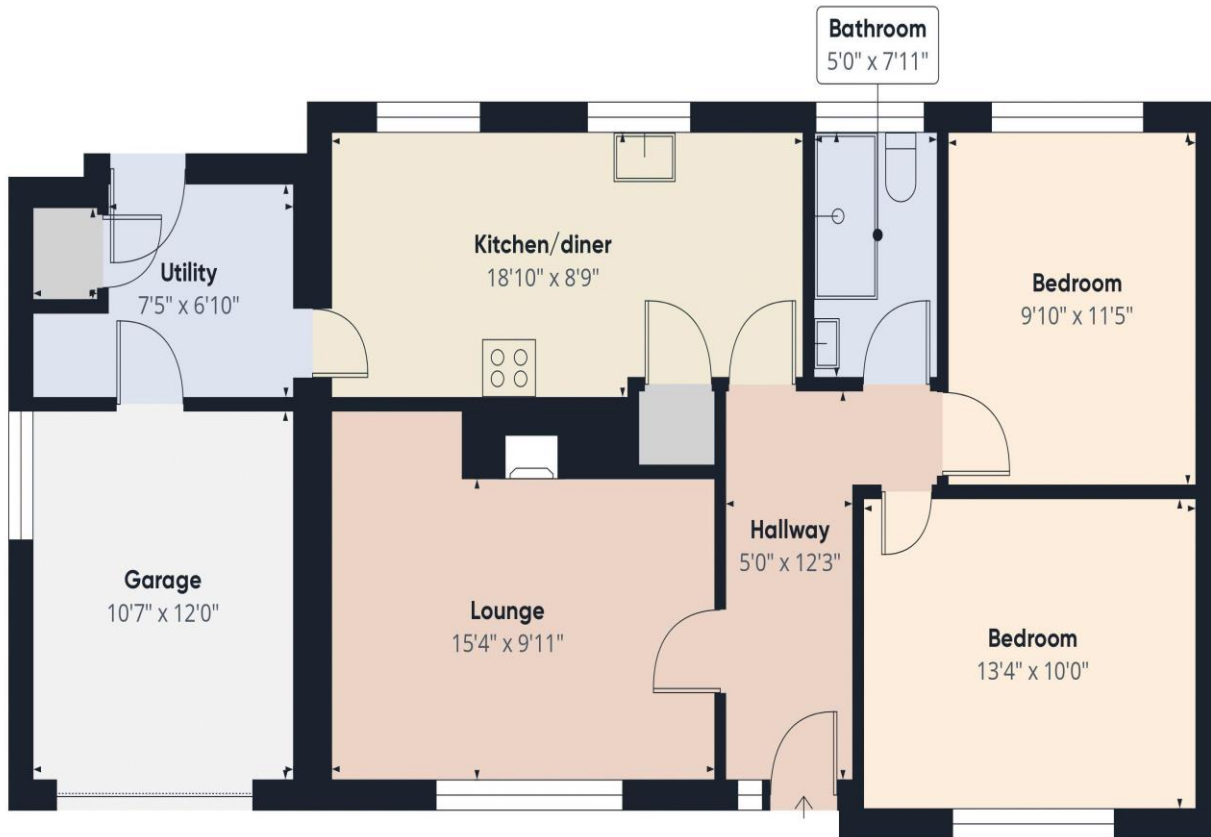
Tel: 01900 837 804 Tel: 01946 413 001 Email: admin@firstchoicemove.co.uk www.firstchoicemove.co.uk



First Choice Move Ltd. registered in England and Wales Number 0767776 VAT number 118201945
Registered office and postal address:
GATE HOUSE, HALLWOOD ROAD, LILLYHALL, WORKINGTON, CUMBRIA. CA14 4JR

Tel: 01900 837 804 Tel: 01946 413 001 Email: admin@firstchoicemove.co.uk www.firstchoicemove.co.uk





Approximate total area⁽¹⁾
905.87 ft²

(1) Excluding balconies and terraces

While every attempt has been made to ensure accuracy, all measurements are approximate, not to scale. This floor plan is for illustrative purposes only.

Calculations were based on RICS IPMS 3C standard. Please note that calculations were adjusted by a third party and therefore may not comply with RICS IPMS 3C.

GIRAFFE360