



A fantastic home for first time buyers, couples or families

Features a spacious, well presented lounge

Three spacious bedrooms, no box room here!

Benefits from off-street parking

Highly sought after area of Whitehaven

New roof 2021, boiler 2023, triple glazed windows and exterior doors 2020

Stylish kitchen/diner with French doors to the garden

Stylish bathroom plus downstairs WC

Lovely garden to the rear offering plenty of space

Walking distance to numerous popular schools

Looking for a new pad to call home sweet home? Well, look no further! This fantastic property is the real deal, perfect for first-time buyers, couples or families with three bedrooms.

Step inside and you'll be greeted by a space that's had some serious TLC - we're talking a new roof in 2021, a shiny new boiler in 2023, and not forgetting those triple glazed windows and exterior doors fitted back in 2020. Yep, this home is as solid as they come.

Kick back and relax in the spacious lounge, perfect for movie nights or chilling with your squad. And when hunger strikes, head over to the stylish kitchen/diner. With French doors leading out to the garden, there's plenty of natural light flooding in. You've got all the space you need for a dining table and chair set, making it the ideal spot for breakfast with a view.

No need to battle over bedrooms here - all three are spacious and ready for you to put your own stamp on them. And forget about a tiny box room, we've got a third bedroom that's just begging to become a home office or a luxe dressing room - the choice is yours.

Need to freshen up? No prob! You've got a stylish bathroom plus a handy downstairs WC on the cards. And let's not forget about the off-street parking, because who wants to hunt for a spot after a long day?

The cherry on top? The lovely garden out back that's just waiting for your green-fingered touch. With all that space, you can host BBQs, or just kick back with a good book - the possibilities are endless.

Located in the highly sought-after area of Whitehaven, you're in good company with The Whitehaven Academy, St Benedict's Catholic High School, Hensingham Primary School and Jericho Primary School all within walking distance. Convenience at its finest, if you ask us.

So, what are you waiting for? This property won't be on the market for long. Arrange a viewing today and start picturing yourself living your best life in this cosy abode. Trust us, you won't regret it!



Selling with First Choice Move

First Choice Move began in 2010 from humble beginnings—from a kitchen table in Egremont. Built on family values, hard work, and a passion for property, we have grown to become the largest estate agency in West Cumbria. As a family-run business, we believe in combining traditional estate agency values with the very latest marketing techniques to ensure every property gets maximum exposure. From high-quality photography, 3D tours, drone photography, videos and professional floorplans to online advertising and social media campaigns, we use a tailored approach to attract the right buyers. Our commitment to excellence has earned us multiple national, industry-recognised awards, a testament to our dedication to delivering outstanding service and results. We are more than just an estate agency—we're a trusted partner for buyers and sellers across West Cumbria, combining innovation with personal service to help you move with confidence.

Mortgages

Need help finding the right mortgage for your needs? First Choice Move Mortgage Services are part of the Mortgage Advice Bureau network, one of the UK's largest award-winning mortgage brokers. We can search from a selection of over 90 different lenders with over 12,000 different mortgages, including exclusive deals only available through us, to find the right deal for you. Our advice will be specifically tailored to your needs and circumstances, which could be for a first-time buyer, home-mover, or for re-mortgaging or investing in property. Contact us on 01946 413001 to arrange a free consultation with one of our experienced and dedicated in house mortgage and protection advisers. You may have to pay an early repayment charge to your existing lender if you re-mortgage. There may be a fee for mortgage advice. The actual amount you pay will depend upon your circumstances. The fee is up to 1% but a typical fee is 0.3% of the amount borrowed.

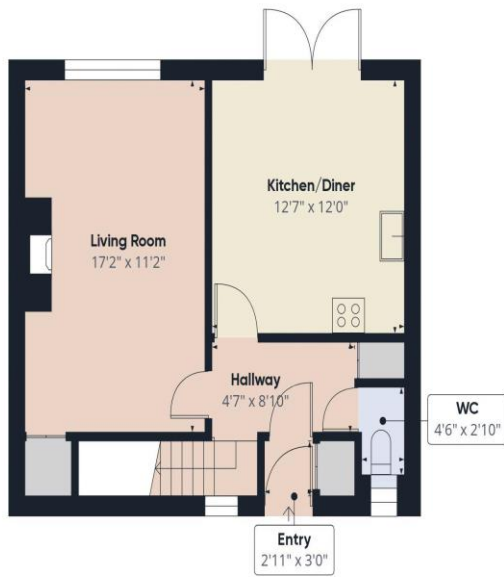
Note

Please note that all measurements have been taken using a laser tape measure which may be subject to a small margin of error. Some photos may have been taken with a wide-angle camera lens. First Choice Move has not tested any apparatus, equipment, fixtures and fittings or services and so cannot verify that they are in working order or fit for the purpose. A buyer is advised to obtain verification from their solicitor or surveyor. References to the tenure of a property are based on information supplied by the Seller. The Agent has not had sight of the title documents.









Ground Floor



Floor 1



Approximate total area⁽¹⁾
902.55 ft²

(1) Excluding balconies and terraces

While every attempt has been made to ensure accuracy, all measurements are approximate, not to scale. This floor plan is for illustrative purposes only.

Calculations are based on RICS IPMS 3C standard.

GIRAFFE360